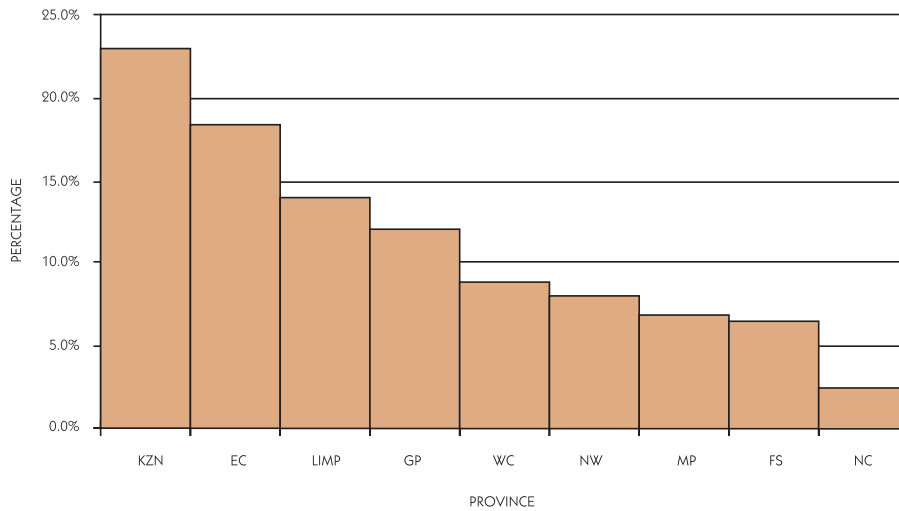


SOCIAL WELFARE

FIGURE 8: BENEFICIARIES OF GRANTS 2000 - 2003



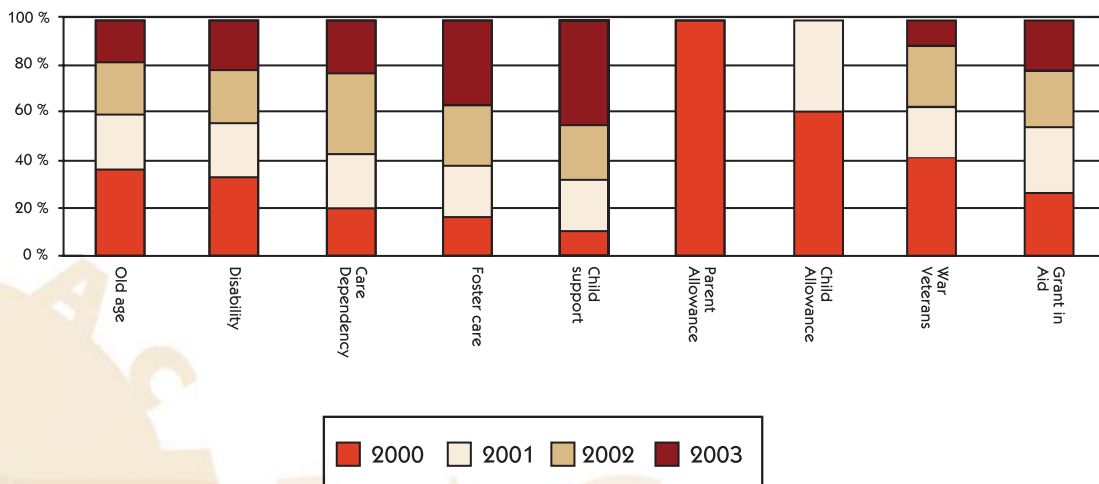
Source: Department of Social Welfare Annual Report 2003

The figures used in this chart are set out in table 9 of the annexure

The total number of grant beneficiaries has increased from 3.2 million in April 2000 to 5.8 million in April 2003. According to the Department of Social Welfare, this represents an increase of 81.3% over the last four years.

The three poorest provinces, namely, KwaZulu-Natal, the Eastern Cape and Limpopo account for 55.2% of the total number of beneficiaries of social grants. KwaZulu-Natal has the highest proportion of beneficiaries (23.15%).

FIGURE 9: TRENDS IN NUMBER OF GRANT BENEFICIARIES

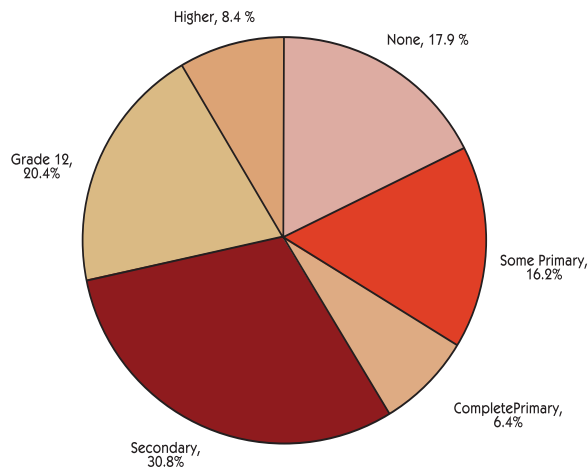


Source: Department of Social Welfare Annual Report 2003

The figures used in this chart are set out in table 10 of the annexure

The number of foster care grants has increased by 88 920 between April 2000 and April 2003. The increase in Limpopo Province (8 319) and KwaZulu-Natal (24 2339) account for most of this increase. Growth in the number of Care Dependency Grants has also been rapid. The increasing number of people affected by HIV/AIDS will lead to continuing growth in these grants. The number of beneficiaries for War Veterans continues to decline.

FIGURE 10: PERCENTAGE OF THE POPULATION AGED 20 YEARS OR MORE BY HIGHEST LEVEL OF EDUCATION COMPLETED

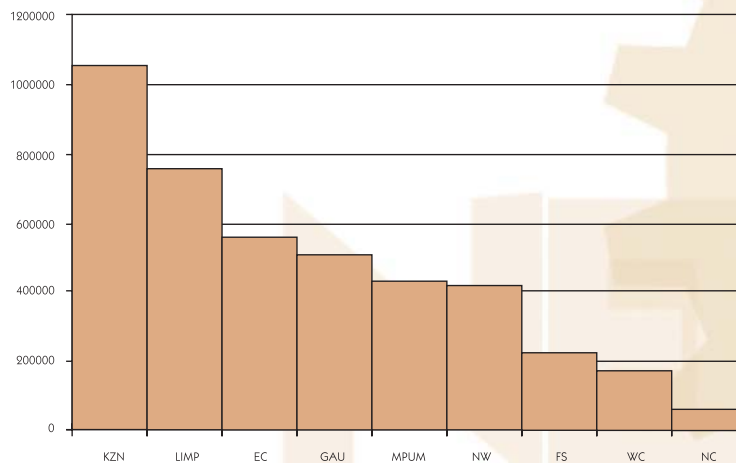


Source: Census 2001 (Stats SA)

The figures used in this chart are set out in table 11 of the annexure

Almost 18% (2% higher than 1996 Census figures) of South Africans aged 20 years or more have received no education. On the other end of the scale only 8.4% (2.2% higher than 1996 census figures) have post school qualifications and 20.4% (4% higher than 1996 census figures) grade 12.

FIGURE 18: POPULATION AGED 20 YEARS OR MORE WITH NO EDUCATION IN EACH PROVINCE

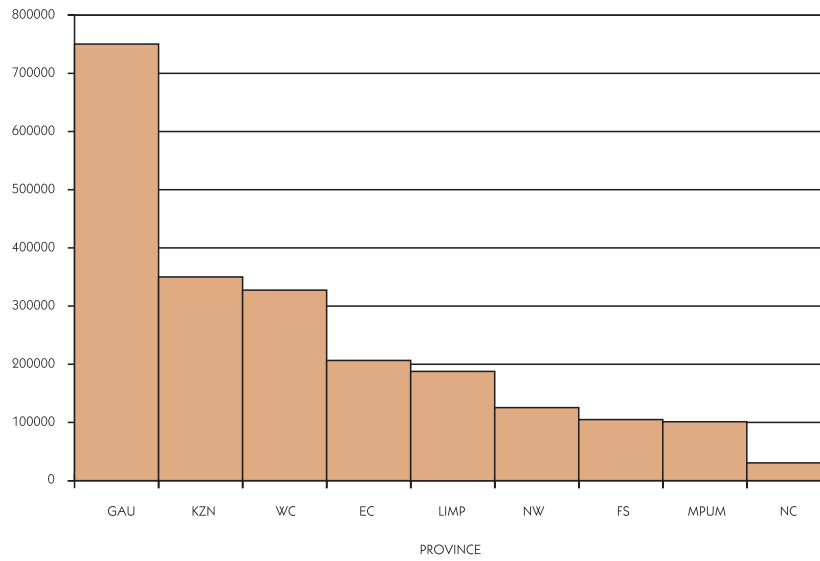


Source: Census 2001 (Stats SA)

The figures used in this chart are set out in table 11 of the annexure

A large proportion of people in KwaZulu-Natal and Limpopo have received no education. The Free State, one of the poorest provinces, has fewer people who have no education. The Western Cape, being one of the two wealthiest provinces has substantially fewer people who have received no education.

FIGURE 12: POPULATION AGED 20 YEARS OR MORE WITH A TERTIARY EDUCATION IN EACH PROVINCE

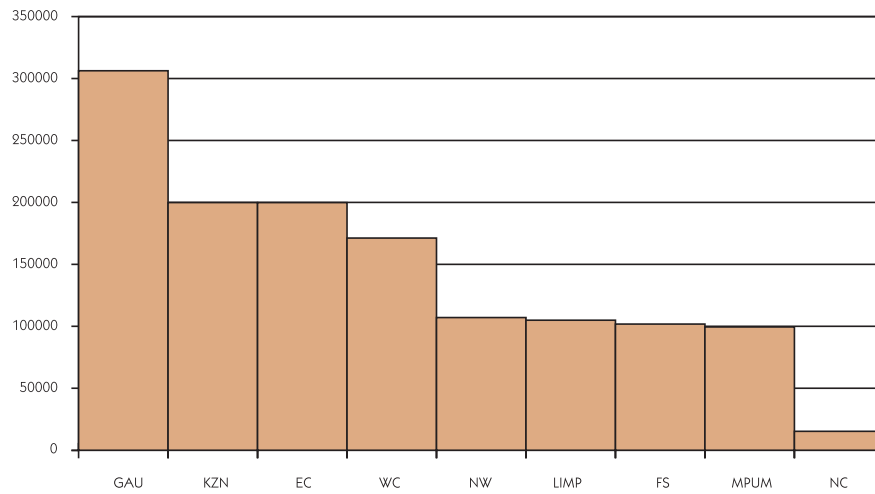


Source: Census 2001 (Stats SA)

The figures used in this chart are set out in table 11 of the annexure

Gauteng, followed by KwaZulu-Natal has the highest number of people who have a tertiary education. The North West, which is not the poorest province in the country, is ranking among the lowest in the scale.

FIGURE 13: PROPERTIES TRANSFERRED 2003/04



Source: Department of Housing, 2003

The figures used in this chart are set out in table 12 of the annexure

TABLE 1

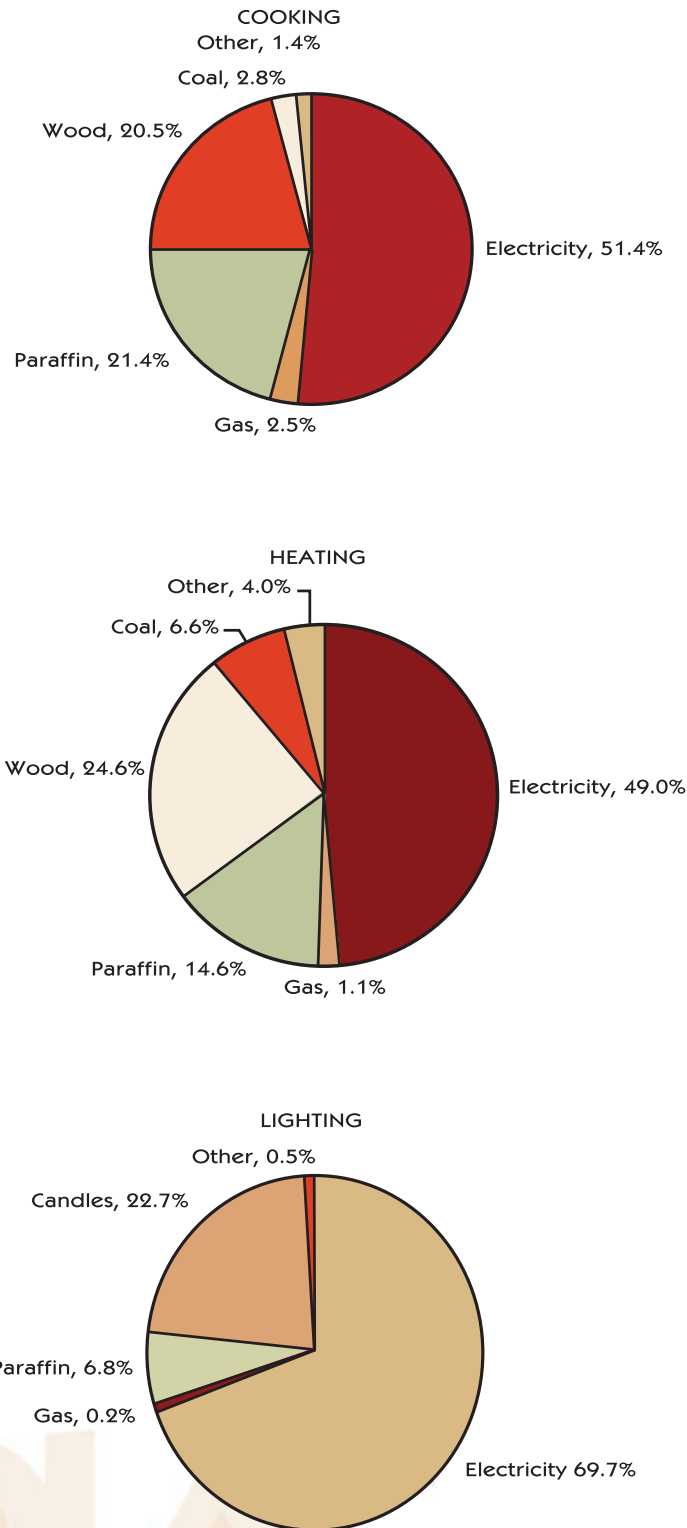
TABLE 1: HOUSES COMPLETED OR UNDER CONSTRUCTION:  
1994 TO MARCH 2004

	1994-97	1997/98	1998/99	1999/00	2000/01	2001/02	2002/03	2003/04	Total
<b>EC</b>	6,511	32,223	24,659	20,345	34,021	10,816	58,662	27,119	<b>214,356</b>
<b>FS</b>	13,042	18,001	17,391	7,177	16,088	7,005	9,155	16,746	<b>104,605</b>
<b>GAU</b>	56,239	70,924	58,170	45,384	38,547	46,723	24,344	49,034	<b>389,365</b>
<b>KZN</b>	17,553	78,468	53,105	28,997	28,547	14,379	24,485	33,668	<b>279,202</b>
<b>LIMP</b>	11,108	15,743	22,899	12,401	20,996	16,667	14,953	15,810	<b>130,577</b>
<b>MPUM</b>	19,884	10,873	16,838	4,808	16,457	14,584	21,649	21,232	<b>126,325</b>
<b>NC</b>	6,666	4,768	2,387	2,600	4,148	2,588	6,056	3,787	<b>33,000</b>
<b>NW</b>	21,287	20,977	18,367	12,944	14,109	13,885	23,784	10,484	<b>135,837</b>
<b>WC</b>	25,321	43,834	34,575	26,916	17,730	16,634	20,500	12,301	<b>197,811</b>
<b>Total</b>	<b>177,611</b>	<b>295,811</b>	<b>248,391</b>	<b>161,572</b>	<b>190,643</b>	<b>143,281</b>	<b>203,588</b>	<b>190,181</b>	<b>1,611,078</b>

Source: Department of Housing

As can be seen in Table 1, a total of 1 611 078 houses had been completed or were under construction in the period April 1994 to March 2004.

FIGURE 14: MAIN ENERGY SOURCES USED BY HOUSEHOLDS FOR COOKING, HEATING AND LIGHTING



Source: Census 2001 (Stats SA)

The figures used in this chart are set out in table 13 of the annexure

A substantial portion of households still use wood, coal and paraffin as an energy source. This is particularly prevalent in provinces that have a greater portion of rural residents, where electrification of dwellings is partial or non-existent.